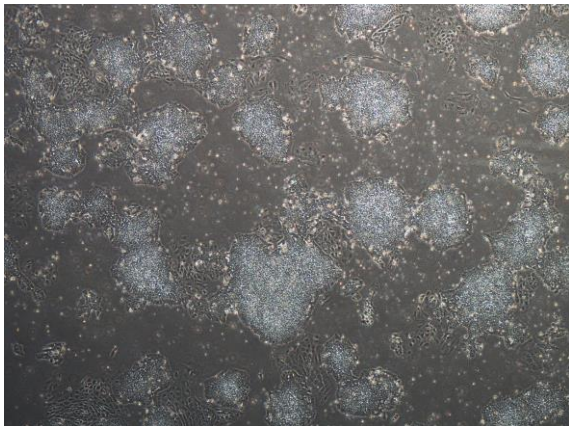
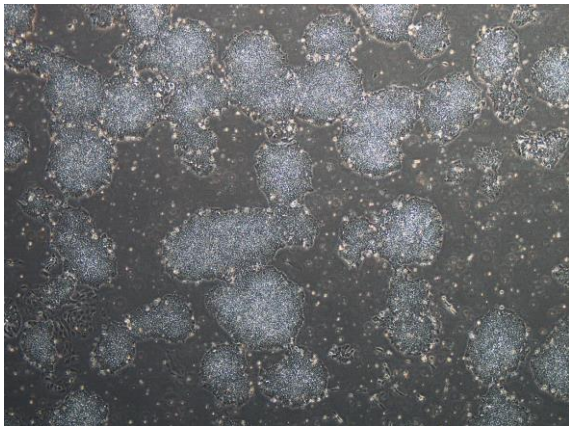


【 CiRA-j-1124 】 Morphology of iPSC colonies

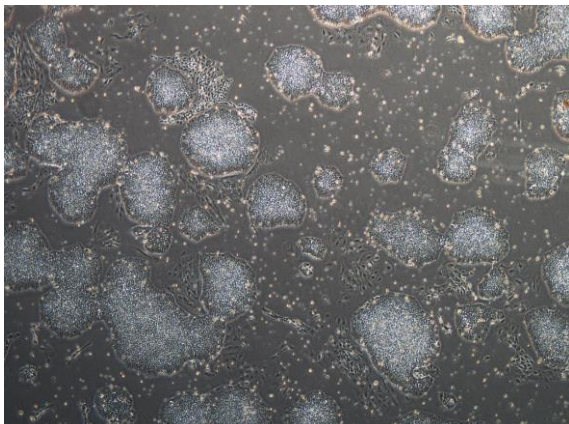
CiRA-j-1124-A: passage-2



CiRA-j-1124-B: passage-2



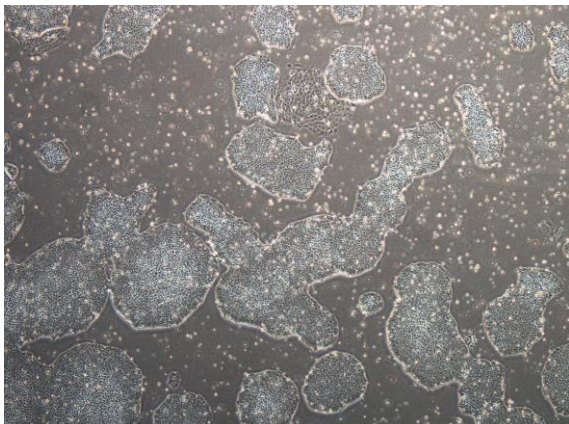
CiRA-j-1124-C: passage-2



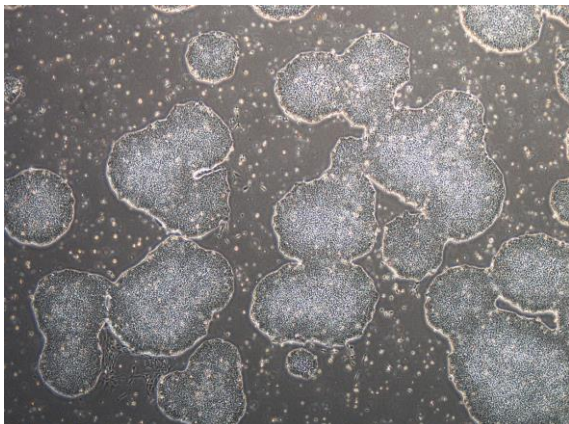
CiRA-j-1124-D: passage-2



CiRA-j-1124-E: passage-2



CiRA-j-1124-F: passage-2



(All images were captured at 4x magnification)